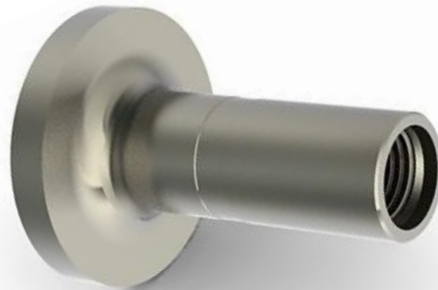


PULL / PRESSURE TEST TOOL

The Pull/Pressure Test Sub accommodates static high tensile service string pull testing and high pressure testing.

Features:

- >High tensile pull testing of connectors and tool strings
- >High pressure testing of connectors and tool strings
- >Static testing can be performed while pull testing without compromising the connector or the tool string
- >1/2" NPT port for high pressure relief
- >Test connector and service string for downhole tensile capability
- >Check for static leaks on tool before entering well
- >Less downtime for tests setup
- >Safe pressure relief of objects



Product Specifications:

Tool OD	Various Plate OD'S
Connections	1"MT Box to 3 ½ " REG
Tensile Strength (lbs)	Various – depends on Thread
Torsional Strength (lbs)	Various – depends on Thread
ID (in)	Various – depends on Thread
Length (in)	Various – depends on Thread
Working Pressure (psi)	10,000

ENVISION DOWNHOLE, LLC

801 S. Pagewood Ave. Suite 7 Odessa, TX 79761

T: 432-217-8644 | envisiondownhole.com

